

THE BIG BENDER

**BIG BEND FLORIDA
UNIT 153 REGION 3**

**AIRSTREAM CLUB
INTERNATIONAL**



**VOLUME 43
NUMBER 2
JANUARY 2017**

bigbendfl.wbcci.net

OFFICERS 2016 - 2017

President
Jim Weilhammer

1st Vice President
Tom Beyer

2nd Vice President
Craig Brinkley

Secretary
Katherine Kamiya

Treasurer
Martina Pelley

Trustees
Gary Anderson
John Duncan
Linda Coleman
Jim Lewis

Membership
Mary & Chip Adams

Directory/Webpage
RoseMarie Anderson

PRESIDENT'S MESSAGE



NEW ADVENTURES FOR THE NEW YEAR

By Jim Weilhammer

Happy New Year to everyone! I wish you a year that is full of adventures, good health and the joy of family and friends. This month we begin our rally season with a *Kids and Grandkids Rally* at a new campground in Eastpoint, FL on the Gulf of Mexico. The good news is that we have a record turnout for a January rally. The sad news is that some members were unable to get reservations at the campground. We have asked Coastline RV Resort to contact us immediately if they get cancellations.

The weather channels and news media have reported record-breaking cold weather in the northern states. On a recent trip to Orlando, Katherine and I noticed that "snowbirds" are filling up many campgrounds. Especially at this time of year, we are competing with them for campground sites. Please book your reservations as soon as possible. We will continue to print future reservation timelines to help you.

WHAT'S INSIDE

2017 Rally Registration.....	2
Toys for Tots.....	2
Holiday Luncheon Spotlight.....	3
Holiday Luncheon Recipe.....	6
Lost and Found.....	7
President's Day Rally	8
WBCCI Community Service.....	9
Region 3 Rally.....	9
Member News.....	10
Welcome Youngest Members...	10





PRESIDENT'S MESSAGE continued . . .

The Yellow Jacket RV Resort, the site for our February rally, has a few sites still available. Be sure to inform the resort staff that you are with the Big Bend Florida Airstream Club when making reservations to assure you get the group discount.

This promises to be an exciting year!

See you down the road.

2017 RALLY REGISTRATION

Registration is open for the February, March, April and May rallies. For more information on each rally site, check the website at <http://bigbendfl.wbcci.net/>. At private campgrounds, ask for the Big Bend Florida Airstream Club rate when making your reservations. State and federal campgrounds fill up early, cancellation costs are nominal, and transferring your reservation to another party is possible if your plans change. If you are interested in hosting or co-hosting a rally and designing the schedule of activities, or if you have any questions, please contact Jim Weilhammer by calling (850) 894-4416 or writing to j.weilhammer@gmail.com.

Bonnie Lewis is our Rally Coordinator this year. When you confirm your campground reservations, please send an email to both Bonnie and the rally host (if named) with your name and site number (if assigned). Bonnie will regularly share up-to-date lists of rally attendees and site numbers to help with your planning.

TOYS FOR TOTS

By Jim Weilhammer

A big **THANK YOU** to all the members who generously donated toys and books to Toys for Tots at the Holiday Luncheon. Jim Sigman represented the United States Marine Corp Reserve and was our guest at the luncheon. He gratefully received our donation which helped brighten Christmas for over 1,000 families this year. Thank you for opening your hearts to others and keeping the spirit of Christmas alive.





HOLIDAY LUNCHEON SPOTLIGHT: Marie Livingston's Steakhouse

By Katherine Kamiya

The holidays can be a time of tremendous joy and also incredible stress as we are pulled in multiple directions. Forty members took time from their hectic holiday schedules to celebrate another successful year of camping adventures with their Airstream buddies. We were honored to have one of the oldest members of the club, Lois Berry, join us as well as the newest members, Rick and Ursula Glenn. Other members in attendance were: Frankie and Bill Worthington; Karon and Tom Beyer; Winston and Carol Montague; Elna and Jay Thompson; Amy and Lamar Waymire; Jason and Annette Friedrich; Linda and Bill Coleman; Annette and Charlie Hurst; Gary and RoseMarie Anderson; John, Gayle and Chris Duncan; Pat and Jim Hentz; Helene and Rob Werner; Pat and Lane Watkins; Monica and Craig Brinkley; Jim and Shelia Skipper; Nancy Davis; and Jim Weilhammer.



Jim Weilhammer, Don & Sandy Wood, Lane Watkins

We had a private room at Marie Livingston's Steakhouse with tables decorated with gaily wrapped Christmas gifts. Lunch choices included steak, shrimp, or chicken along with a salad, baked potato, dessert and beverage. While the service was at a relaxed pace, the food was delicious and worth the wait.



HOLIDAY LUNCHEON SPOTLIGHT: Marie Livingston's Steakhouse continued . . .

We continued our long-time support for Toys for Tots and a corner table started to fill up quickly and was overflowing with donations of books and toys after all guests arrived.



The spirit of giving was in the air and Helene and Monica shared fragrant Meyer lemons from their prolific trees. Jim and I gave each couple a Christmas ornament with our best wishes for a joyous holiday and great New Year.



We opened our home for a Sweet Table following the luncheon and that provided more time to relax and visit and an opportunity satisfy any sweet tooth from a table laden with homemade treats.



HOLIDAY LUNCHEON SPOTLIGHT: Marie Livingston's Steakhouse continued . . .



Helene Werner, Elna Thompson and Ursula Glenn



Frankie Worthington, Monica Brinkley and granddaughter Audrey



Lois Berry, Pat Hentz and Nancy Davis

The Holiday Luncheon was a wonderful celebration and a great way to end of year!



HOLIDAY LUNCHEON RECIPE: Toll House Cookies™

The Chef's Choice dessert at the Holiday Luncheon was a warm Toll House Cookie™. Below is the recipe for this classic cookie with instruction for individual or pan cookies.

Ingredients:

2 ¼ cups of all-purpose flour
1 tsp. baking soda
1 tsp. salt
1 cup unsalted butter at room temperature
¾ cup white sugar
¾ cup brown sugar
1 tsp. pure vanilla extract
2 large eggs
12 oz. semi-sweet chocolate morsels
1 cup chopped walnuts or pecans



Directions:

1. Preheat the oven to 375 degrees. Lightly grease a cookie sheet.
2. Combine dry ingredients and set aside.
3. Cream butter and sugars until smooth. Add vanilla extract and eggs until incorporated.
4. Gradually add flour mixture. Stir in chocolate morsels and nuts.
5. Drop by teaspoonful onto prepared cookie sheet. Bake for 8-10 minutes until cookies are firm and lightly browned.
6. Remove cookies from cookie sheet after one minute and cool completely on rack.
7. Store cooled cookies in an air tight container.

NOTE: Dough can be baked as a pan cookie in a 15" x 10" x 1" greased pan. Bake for 20 minutes. Cool pan cookie on a rack and cut into 2" squares for serving.



LOST AND FOUND

By Bill Coleman

This story actually begins in the middle. This past spring our son, Casey Coleman, and his gal Jackie were planning their wedding. The question arose would she keep her name, or hyphenate it or take our surname? She decided to become a Coleman. So for the wedding reception in Shenandoah National Park they decided to go overboard with “Coleman” decorations, e.g. Coleman camping paraphernalia. He remembered our “Coleman” sign we used when camping and asked if we could bring it to the reception. Linda and I tore apart the trailer and house several times - no sign. We were baffled.

In 1973, my parents were Airstreaming in California and had stopped to visit us and their new grandson, Todd, and had the sign made at a local flea market. After 15 years of travel, they gave the sign to us. We used it until we purchased a new more updated version.

This past October at the rally in Colquitt, GA Winston Montague walked up to me and asked if I wanted a sign with the name Coleman. He had visited Bradley’s Country Store to purchase some of their famous sausage. As he was leaving the store, the owner stopped him and said he thought someone left something behind from the Georgia Plantations and More Caravan. He brought out the Coleman sign. It had been found lying in field. The field was repeatedly mowed and the sign was exposed to the elements for over a year. One day the sign was pulled out of the ground muddy but undamaged.

I put on my thinking cap and recalled that in 2015 Jim Hentz and I drove out to enjoy a smoked pork chop and sausage dinner with the Georgia Plantations and More Caravan folks who were dry camping across from Bradley’s Country Store. I remembered pulling our lawn chairs from the back of the car. I surmised that while extracting the chairs our sign fell out unnoticed.

Guess what the newlyweds got for Christmas? A vintage sign passed along to another generation of Coleman campers.





PRESIDENT'S DAY RALLY SCHEDULE: Yellow Jacket RV Resort, Old Town, FL

By Ginger and Shearn Spenard

Thursday, February 16, 2017

6:00 p.m. Early bird arrivers depart campground for an optional dinner at a local restaurant.

Friday February 17, 2017

6:00 p.m. Depart campground for rally dinner at Salt Creek Restaurant, 23440 SE County Road 349, Suwanee, FL, (352) 542-7072, 14.8 miles, approximately 20 minutes travel time.

6:30 p.m. Reservation under Big Bend Florida Airstream Club.

Saturday February 18, 2017

9:00 a.m. Hot breakfast at the Clubhouse.

5:00 p.m. Social Hour at the Clubhouse. Please bring a light snack to share and your beverage of choice.

6:30 p.m. Dinner of BBQ ribs, baked beans, coleslaw, veggie tray and dessert at the Clubhouse.

Sunday February 19, 2017

9:00 a.m. Continental breakfast at the Clubhouse.

11:00 a.m. Open invitation to campground church services at the Clubhouse.

5:00 p.m. Social Hour at the Clubhouse. Please bring a light snack to share and your beverage of choice.

6:30 p.m. Soup and Salad Bar. Please bring bread/crackers, cheese or dessert to share.

Monday, February 20, 2017

9:00 a.m. Continental breakfast at the Clubhouse.

6:00 p.m. Pot Luck dinner or dinner at a local restaurant based on participant preferences to be determined.

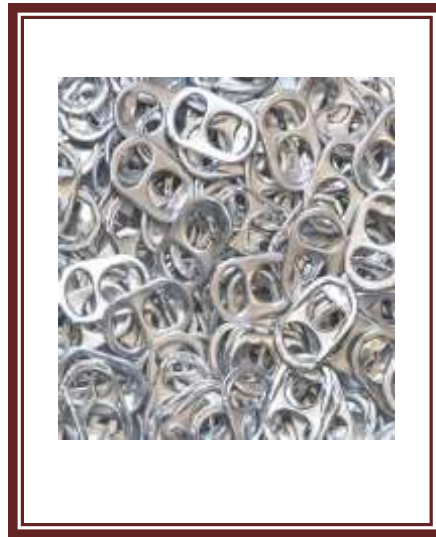
NOTE: All lunches are on your own. Information on local touring will be provided.



WBCCI COMMUNITY SERVICE: Save Pull Tabs to Help Children

By Jim Weilhammer

Last year in Lewisburg, WV, I noticed tables stacked with bags containing hundreds of pull tabs from soda and food cans. I asked about it and learned that each year at the WBCCI International Rally units donate pull tabs to charities in the host community. It is part of WBCCI's effort to give back and thank them for their support. In Lewisburg, this was only a small part of what occurred to me that this was an easy opportunity for us to suggest that we collect pull tabs and donate them at the next rally in July 2017. I will bring a container to each rally to encourage you to also save them at home and bring them to go to Escanaba, MI and will be the courier for our club's pull tab donation.



to support local children's community. It is part of to the local community and during our rally. In small part of what record-breaking flooding. It both a gracious gesture and support WBCCI. I am tabs throughout the year and WBCCI International Rally container to each rally to encourage you to also save to each rally. I am planning be happy to be the courier donation.



RALLY CAMPING RESERVATIONS

The Region 3 Rally will be held April 26-30, 2017 at the Georgia Mountain Fairgrounds located along the shores of beautiful Lake Chatuge in the north Georgia mountain community of Hiawassee, GA. Reservations are filling up for the 150 campsites set aside for the rally. The reservation block will expire February 15th and after that date, sites will be available on a space available basis. For a map of the fairgrounds, go to <http://www.georgiamountainfairgrounds.com>. Note that Area #2 has three-way hook-ups. The camping fee is \$28.00 per night. To make reservations, contact the fairgrounds at (706) 896-4191. Information on rally registration and cost are anticipated later this month. Check the Region 3 website for the latest information, <http://region3.wbcci.net/unitcalendar/>



MEMBER NEWS

By Martina Pelley

Not everyone has renewed their membership but it is not too late. The annual dues, including membership in the Big Bend Florida Unit, are \$75.00. There is a new online process that is quick and easy. To renew online go to: <http://wbcci.org/component/rsform/form/12-renew-your-wbcci-membership>. If you would prefer to renew by mail, please contact me to request the renewal forms and for instructions on processing procedures.

WELCOME TO THE YOUNGEST MEMBERS OF THE AIRSTREAM FAMILY



RoseMarie and Gary's grandson, Sawyer, born 11/28 weighing 9 lbs. 12 oz.



Jim and Katherine's granddaughter, Joan Iris, born 11/28 weighing 9 lbs. 1 oz.



Martina's grandsons, Gabriel James, on the left born 11/4 weighing 6 lbs. 13 oz. and Drake on the right born 9/30 weighing 9lbs.



Look at the stars lighting up the sky:



no one of them stays in the same place.

Seneca, ancient Roman philosopher